

PRODUCT LINES

ABB CONTROL SYSTEMS

Control and safety for your process & power automation needs.

- Freelance Hybrid Control Systems
- Distributed Control Systems (DCS)
- Process Automation Systems
- Programmable Logic Controls (PLC)



ABB INSTRUMENTATION

FOUNDATION Fieldbus, PROFIBUS & HART enabled instrumentation.

- Actuators & Positioners
- Coriolis Meters & Mag Meters
- Controllers & Flow Measurement
- Pressure/Temp Transmitters



ABB PROCESS ANALYTICS

Providing real-time analysis of a process sample or stream.

- Process Gas Chromatographs
- Physical Property Analyzers
- Process Mass Spectrometers
- Process/Laboratory FTIR Analyzers



ADVANCED INSTRUMENTS, INC.

Worldwide supplier of oxygen sensors & oxygen analyzers.

- Trace H2S Analyzers
- Sampling Systems
- Trace & Percent Oxygen Analyzers
- Class 1, Div 1 & 2 Locations



ORION INSTRUMENTS

MLI design advanced level sensing technology.

- Magnetic Level Indicators
- Transmitters, Switches
- Patented Design - Aurora



MAGNETROL

Level & flow controls that transform industrial process measurement.

- Float Level Switches
- Pluse Burst Radar
- Guided Wave Radar
- RF Level Controls



METSO JAMESBURY

Automated on-off & tight shut-off rotary valves; network-ready capable.

- Ball, Flanged & Butterfly Valves
- Manual & Actuated Valves
- Special Service Valves
- Flanged Ball Valves



METSO NELES

Rotary control, automated on-off valve solutions & intelligence devices.

- Electric & Pneumatic Actuation
- Rotary Plug Control Valves
- Segmented Plug Control Valves
- Positioners



METSO PULP & PAPER

World-leading technology & service to the pulp & paper industry.

- Wastewater Treatment
- Total Consistency Measurement
- Microwave Consistency Transmitter & Control



THERMON

Complete range of heat tracing products with performance guarantee.

- Skin Effect Heat Tracing
- Tank Heating Systems
- Electric & Steam Heat Tracing
- Preinsulated Steam Tubing



NOT YOUR AVERAGE REPRESENTATIVE FIRM

2125 East 5th Street, # 104
 Tempe, Arizona 85281
 Office **480.968.9344** | Fax **480.968.9347**
 Email: phoenix@winn-marion.com



www.winn-marion.com



**Winn-Marion
 Barber, LLC**



FREEWAVE

The most diverse family of high-performance & durable radios.

- Spectrum Radios
- Licensed Frequency Radios
- High Throughput/Ethernet Radios
- I/O Series Radios



DELTA INDUSTRIAL VALVES

American made, superior quality knife gate valves.

- High Performance Slurry Knife
- Hydraulic, Pneumatic, Electric
- Gate Valves, Diverter Stations
- Actuation



JOHNSON MATTHEY

Catalysts, metals & process technology.

- Catalytic Converters
- Integrated Catalytic Silencers
- Diesel Particulate Filters
- Emissions Regulation Compliance



TLV

A world authority in steam engineering products and services.

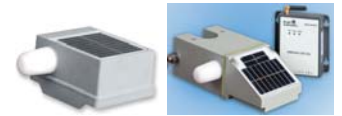
- Pressure Regulators
- Vacuum Steam Heating
- Pumps, Pump & Steam Traps
- & Cooling



BRIGHT AUTOMATION

Advanced control technology, intelligently applied.

- Wireless Load Cell
- Rod Pump & VSD Controller
- Wireless & Stand-Alone Inverters
- Wireless Inclinometer



ATREX ENERGY

Cost-effective & fuel-efficient power solutions for remote applications.

- Remote Power Generator System
- Replacement Parts & Accessories
- High Pressure Regulator
- Single Prob Alarm Modules



AMERICAN SENSOR TECHNOLOGIES

MEMS pressure sensors, pressure transducers & pressure transmitters.

- Position Sensing
- 1-5V, 4-20mA, mV
- Pressure Sensors & Switches
- Class 1, Div 1 & 2 Locations



PGI INTERNATIONAL

Total product capability for the process, power & gas industries.

- Instrument Valves & Manifolds
- Sample Probes & Cylinders
- Liquid & Gas Sampling Systems
- Heated Sample Enclosures



FAIRCHILD

Precision, high quality, pneumatic & electropneumatic controls.

- Air & Gas Pressure Regulators
- Back Pressure Regulators
- I/P & E/P Transducers
- Volume Boosters



WOODWARD

Energy control systems & solutions built for exceptional performance.

- Diesel & Gas Engine Controls
- Generator & Switchgear Controls
- Actuators & Governors
- Mechanical Governor Repair



DURAG, INC.

Solutions for combustion & environment.

- Environmental Monitoring
- Volume Flow Meter
- Dust, Filter, Ambient Monitoring
- Tunnel, Visibility, Airflow Sensor



FOSSIL POWER SYSTEMS

World class leader in the supply of control solutions & instrumentation.

- Boiler Drum Level
- Color Bi-Color Water Level
- Feedwater Heater Level
- Single Prob Alarm Modules

